

Anthology Marble

EMIL
CERAMICA



I DETTAGLI FANNO LA PERFEZIONE
LA PERFEZIONE NON È UN DETTAGLIO

L. Da Vinci

DETAILS MAKE PERFECTION,
PERFECTION IS NOT A DETAIL

L. Da Vinci

Velvet Marble



603A2R
Velvet Marble
60x60 (23^{5/8}"x23^{5/8}")
Old Matt



603A2R
Velvet Marble
60x60 (23^{5/8}"x23^{5/8}")
Old Matt



603A2R
Velvet Marble
60x60 (23^{5/8}"x23^{5/8}")
Old Matt



593A2P
Velvet Marble
59x59 (23^{1/4}"x23^{1/4}")
Lappato Plus



593A2P
Velvet Marble
59x59 (23^{1/4}"x23^{1/4}")
Lappato Plus



I303A6R
Mosaico Classic
Wild Copper
30x30 (11^{13/16}"x11^{13/16}")
Old Matt

603A6R
Wild Copper
60x60 (23^{5/8}"x23^{5/8}")
Old Matt

593A2P
Velvet Marble
59x59 (23^{1/4}"x23^{1/4}")
Lappato Plus



Royal Marfil

633A1R
Royal Marfil
30x60 (11^{13/16}"x23^{5/8}")
Old Matt

603A1R
Royal Marfil
60x60 (23^{5/8}"x23^{5/8}")
Old Matt

603A1R
Royal Marfil
60x60 (23^{5/8}"x23^{5/8}")
Old Matt



R303A1P
Mosaico Trend
Royal Marfil
29,4x29,4 (11⁹/₁₆"x11⁹/₁₆")
Lappato Plus





593A1P
Royal Marfil
59x59 (23^{1/4}"x23^{1/4}")
Lappato Plus

913A6P
Fascia Line
Wild Copper
5,7x59 (2^{1/4}"x23^{1/4}")
Lappato Plus

053A1P
Tozzetto Little
Royal Marfil
5,7x5,7 (2^{1/4}"x2^{1/4}")
Lappato Plus

Wild Copper

593A6P
Wild Copper
59x59 (23¹/₄"x23¹/₄")
Lappato Plus





633A6R
Wild Copper
30x60 (11^{13/16}"x23^{5/8}")
Old Matt



I303A1R
Mosaico Classic
Royal Marfil
30x30 (11^{13/16}"x11^{13/16}")
Old Matt

633A6R
Wild Copper
30x60 (11^{13/16}"x23^{5/8}")
Old Matt



593A6P
Wild Copper
59x59 (23^{1/4}"x23^{1/4}")
Lappato Plus



593A6P
Wild Copper
59x59 (23^{1/4}"x23^{1/4}")
Lappato Plus

M303A6R
Mosaico Wall
Wild Copper
30x30 (11^{13/16}"x11^{13/16}")
Old Matt



603A0R
Luxury White
60x60 (23^{5/8}"x23^{5/8}")
Old Matt

Luxury
White

I303A0R
Mosaico Classic
Luxury White
30x30 (11^{13/16}"x11^{13/16}")
Old Matt

603A0R
Luxury White
60x60 (23^{5/8}"x23^{5/8}")
Old Matt



293A0P
Luxury White
29,4x59 (11^{9/16}x23^{1/4})
Lappato Plus



R303A0P
Mosaico Trend
Luxury White
29,4x29,4 (11⁹/₁₆"x11⁹/₁₆")
Lappato Plus

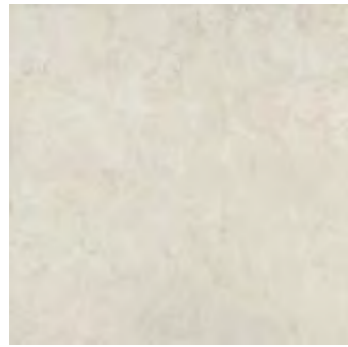
593A0P
Luxury White
59x59 (23¹/₄"x23¹/₄")
Lappato Plus



COLORI/FORMATI

colours / sizes - couleurs / formats - farben / formate - colores / tamaños - цвета / форматы

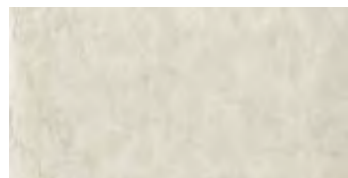
Luxury White



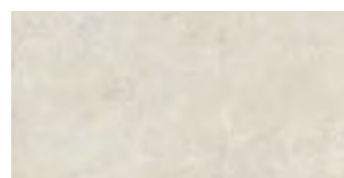
60x60 - 23^{5/8}" x 23^{5/8}"
603A0R Old Matt Rett. ● 662



59x59 - 23^{1/4}" x 23^{1/4}"
593A0P Lappato[®] Rett. ● 78
plus

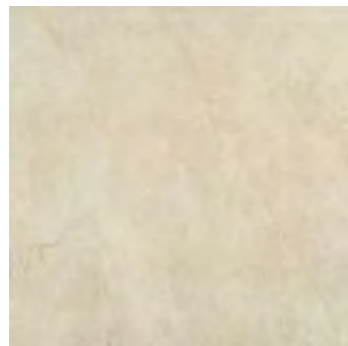


30x60 - 11^{13/16}" x 23^{5/8}"
633A0R Old Matt Rett. ● 61



29,4x59 - 11^{9/16}" x 23^{1/4}"
293A0P Lappato[®] Rett. ● 80
plus

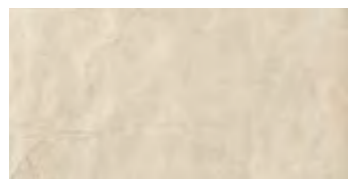
Royal Marfil



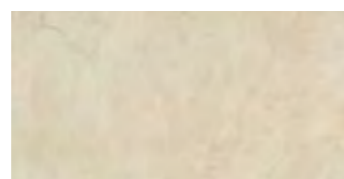
60x60 - 23^{5/8}" x 23^{5/8}"
603A1R Old Matt Rett. ● 662



59x59 - 23^{1/4}" x 23^{1/4}"
593A1P Lappato[®] Rett. ● 78
plus



30x60 - 11^{13/16}" x 23^{5/8}"
633A1R Old Matt Rett. ● 61

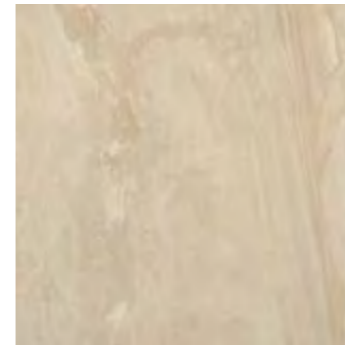


29,4x59 - 11^{9/16}" x 23^{1/4}"
293A1P Lappato[®] Rett. ● 80
plus

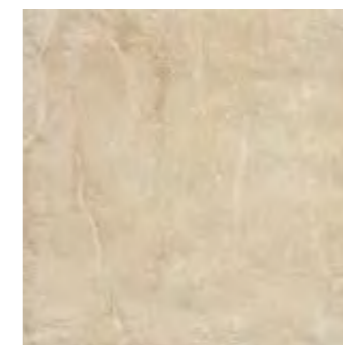
COLORI/FORMATI

colours / sizes - couleurs / formats - farben / formate - colores / tamaños - цвета / форматы

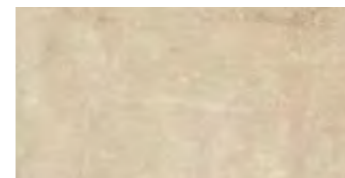
Velvet Marble



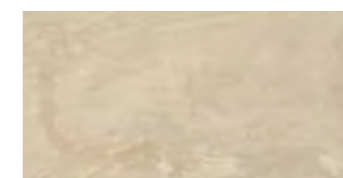
60x60 - 23^{5/8}" x 23^{5/8}"
603A2R Old Matt Rett. ● 662



59x59 - 23^{1/4}" x 23^{1/4}"
593A2P Lappato[®] Rett. ● 78
plus



30x60 - 11^{13/16}" x 23^{5/8}"
633A2R Old Matt Rett. ● 61

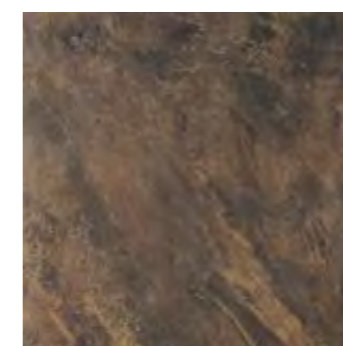


29,4x59 - 11^{9/16}" x 23^{1/4}"
293A2P Lappato[®] Rett. ● 80
plus

Wild Copper



60x60 - 23^{5/8}" x 23^{5/8}"
603A6R Old Matt Rett. ● 662



59x59 - 23^{1/4}" x 23^{1/4}"
593A6P Lappato[®] Rett. ● 79
plus



30x60 - 11^{13/16}" x 23^{5/8}"
633A6R Old Matt Rett. ● 61



29,4x59 - 11^{9/16}" x 23^{1/4}"
293A6P Lappato[®] Rett. ● 81
plus

DECORI

Decors - Decors - Dekore - Decorados - Декоры

COLORI/FORMATI

colours / sizes - couleurs / formats - farben / formate - colores / tamaños - цвета / форматы

MOSAICO CLASSIC OLD MATT*

Tessera - Chip 2,8x2,8 - 1^{1/8}"x1^{1/8}"



30x30 - 11^{13/16}"x11^{13/16}"
I303A0R Luxury White ● 99



30x30 - 11^{13/16}"x11^{13/16}"
I303A1R Royal Marfil ● 99



30x30 - 11^{13/16}"x11^{13/16}"
I303A2R Velvet Marble ● 99



30x30 - 11^{13/16}"x11^{13/16}"
I303A6R Wild Copper ● 99

MOSAICO WALL OLD MATT*

Tessera - Chip 4,8x9,8 - 1^{7/8}"x3^{7/8}"



30x30 - 11^{13/16}"x11^{13/16}"
M303A0R Luxury White ● 87



30x30 - 11^{13/16}"x11^{13/16}"
M303A1R Royal Marfil ● 87



30x30 - 11^{13/16}"x11^{13/16}"
M303A2R Velvet Marble ● 87

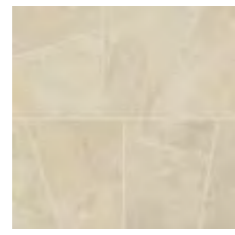


30x30 - 11^{13/16}"x11^{13/16}"
M303A6R Wild Copper ● 87

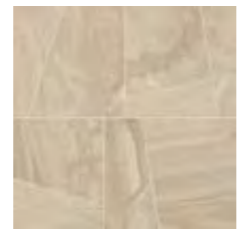
MOSAICO TREND Lappato plus*



29,4x29,4 - 11^{9/16}"x11^{9/16}"
R303A0P Luxury White ● 104



29,4x29,4 - 11^{9/16}"x11^{9/16}"
R303A1P Royal Marfil ● 104



29,4x29,4 - 11^{9/16}"x11^{9/16}"
R303A2P Velvet Marble ● 104



29,4x29,4 - 11^{9/16}"x11^{9/16}"
R303A6P Wild Copper ● 104

FASCIA LINE Lappato plus



5,7x59 - 2^{1/4}"x23^{1/4}"
913A6P Wild Copper ● 7
Pcs. Box.30

TOZZETTO LITTLE Lappato plus



5,7x5,7 - 2^{1/4}"x2^{1/4}"
053A0P Luxury White ● 2
Pcs. Box.16



5,7x5,7 - 2^{1/4}"x2^{1/4}"
053A1P Royal Marfil ● 2
Pcs. Box.16



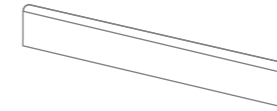
5,7x5,7 - 2^{1/4}"x2^{1/4}"
053A2P Velvet Marble ● 2
Pcs. Box.16



5,7x5,7 - 2^{1/4}"x2^{1/4}"
053A6P Wild Copper ● 2
Pcs. Box.16

PEZZI SPECIALI

Trims - Pieces Speciales - Formteile - Piezas Especiales - Специальные Изделия

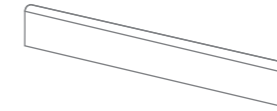


BATTISCOPA - SKIRTING OLD MATT

7,5x60 - 2^{15/16}"x23^{5/8}"

Pcs. Box. 15 - ML x Box 9

873A0R Luxury White Rett. ● 11
873A1R Royal Marfil Rett. ● 11
873A2R Velvet Marble Rett. ● 11
873A6R Wild Copper Rett. ● 11



BATTISCOPA - SKIRTING Lappato plus

7,3x59 - 2^{7/8}"x23^{1/4}"

Pcs. Box. 15 - ML x Box 8,85

953A0P Luxury White Rett. ● 15
953A1P Royal Marfil Rett. ● 15
953A2P Velvet Marble Rett. ● 15
953A6P Wild Copper Rett. ● 15

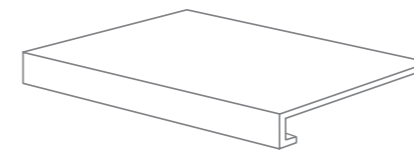


TORELLO - V-CAP OLD MATT

5x30 - 1^{15/16}"x11^{13/16}"

Pcs. Box. 3

VC3A0 Luxury White ● 25
VC3A1 Royal Marfil ● 25
VC3A2 Velvet Marble ● 25
VC3A6 Wild Copper ● 25

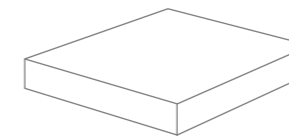


GRADONE - STEP OLD MATT

33x60x3,2x3,2 - 12^{15/16}"x23^{5/8}"x1^{1/4}"x1^{1/4}"

Pcs. Box. 4 - ML x Box 2,40

1C3A0R Luxury White Rett. ● 661
1C3A1R Royal Marfil Rett. ● 661
1C3A2R Velvet Marble Rett. ● 661
1C3A6R Wild Copper Rett. ● 661



ANGOLARE - CORNER TILE OLD MATT

33x33x3,2x3,2 - 12^{15/16}"x12^{15/16}"x1^{1/4}"x1^{1/4}"

Pcs. Box. 2 - ML x Box 0,66

1A3A0R Luxury White Rett. ● 58
1A3A1R Royal Marfil Rett. ● 58
1A3A2R Velvet Marble Rett. ● 58
1A3A6R Wild Copper Rett. ● 58



ANG. TORELLO - V-CAP CORNER OLD MATT

3x5 - 1^{3/16}"x1^{15/16}"

Pcs. Box. 1

CN3A0 Luxury White ● 25
CN3A1 Royal Marfil ● 25
CN3A2 Velvet Marble ● 25
CN3A6 Wild Copper ● 25

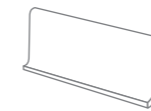


MATITA - PENCIL OLD MATT

2x30 - 1^{13/16}"x11^{13/16}"

Pcs. Box. 3

LS3A0L Luxury White ● 16
LS3A1L Royal Marfil ● 16
LS3A2L Velvet Marble ● 16
LS3A6L Wild Copper ● 16



COVE BASE OLD MATT*

16x30 - 6^{5/16}"x11^{13/16}"

Pcs. Box. 30

893A0 Luxury White ● 30
893A1 Royal Marfil ● 30
893A2 Velvet Marble ● 30
893A6 Wild Copper ● 30



COVE BASE ANG. INT. OLD MATT*

2,5x16 - 1^{5/16}"x6^{5/16}"

Pcs. Box. 10

A13A0 Luxury White ● 28
A13A1 Royal Marfil ● 28
A13A2 Velvet Marble ● 28
A13A6 Wild Copper ● 28



COVE BASE ANG. EST. OLD MATT*

2,5x16 - 1^{5/16}"x6^{5/16}"

Pcs. Box. 10

AE3A0 Luxury White ● 28
AE3A1 Royal Marfil ● 28
AE3A2 Velvet Marble ● 28
AE3A6 Wild Copper ● 28



MATITA ANG. EST. - PENCIL OUT CORNER OLD MATT

2x2 - 1^{13/16}"x1^{13/16}"

Pcs. Box. 1

AE3A0L Luxury White ● 22
AE3A1L Royal Marfil ● 22
AE3A2L Velvet Marble ● 22
AE3A6L Wild Copper ● 22

* Ordine minimo di 1000 pezzi - Minimum order pcs 1000 - Commande minimale 1000 boîtes
Mindestbestellmenge 1000 Stk - pedido mínimo 1000 piezas - Минимальный заказ 1000 штук

* Su rete in fibra - On fibre mesh backing - Sur filet en fibre de verre - Auf Glasfasernetz - Sobre malla de fibra - На волоконной сетке

Il lappato scopre una nuova superficie.

Lappato Plus è l'innovativo processo produttivo che definisce nuovi confini nel trattamento delle superfici ceramiche.

La tecnologia brevettata Lappato Plus crea una barriera invisibile che protegge le piastrelle, le rende più luminose e ne valorizza le caratteristiche estetiche. Il trattamento con microparticelle garantisce una protezione totale e compatta, con un'ottima pulibilità nel tempo. Un risultato eccellente per assicurare il massimo splendore all'ambiente.

I risultati dei test di laboratorio dimostrano che lo speciale composto applicato garantisce una manutenzione semplice e pratica. Le macchie vengono eliminate con facilità. Le piastrelle ritrovano l'originale lucentezza.

Il trattamento conferisce alla ceramica un effetto seta. Lappato Plus diventa un piacere al tatto.

Lappato Plus: la soluzione migliore per gli ambienti residenziali.

Lappato tiles discover a new surface

Lappato Plus is the innovative production process that defines new boundaries in the treatment of ceramic surfaces.

Patented Lappato Plus technology creates an invisible barrier that protects the tiles, makes them brighter and enhances their aesthetic characteristics. Micro-particle treatment ensures total and compact protection, with excellent cleanability over the years. An outstanding result to ensure utmost interior splendour.

Test results show that the special applied compound ensures simple and practical cleaning. Stains are easily eliminated. The tiles re-acquire their original brightness.

The treatment gives the ceramic surface a silky effect. Lappato Plus is a pleasure to touch.

Lappato plus: the best solution for living interiors.

Anthology Marble Lappato Plus è realizzata con l'innovativo trattamento con microparticelle. Eventuali effetti di alonatura in particolari condizioni di luce (es. controluce) sono da considerarsi caratteristica peculiare del prodotto per ottenere l'effetto estetico desiderato.

Anthology Marble Lappato Plus is produced with an innovative microparticle treatment. Any "halo" effect in particular light conditions (e.g. backlight) is to be considered peculiar characteristic of the product in order to get the desired aesthetic effect.



Grazie al sistema digitale Ink Jet ad alta definizione (360 dpi) è possibile realizzare una gamma di grafiche con infinite variazioni. Thanks to the High definition Ink jet digital system (360 dpi) a wide range of graphics with innumerable variations can be obtained. Grâce au système ink jet haute définition (360 dpi) il est possible d'obtenir une gamme infinie de graphismes. Dank dem Ink Jet Hochauflösungsdigitalsystem mit 360 dpi kann man eine unzählreiche Reihe grafischer Effekte realisieren. Gracias al sistema digital Ink Jet a alta definición (360 dpi), es posible realizar una gama infinita de variaciones gráficas. Благодаря цифровой струйной системе печати высокого разрешения (360 точек на дюйм) можно получить гамму графических изображений с неисчислимыми вариациями.

Anthology Marble

Dry - Pressed Ceramic Tiles Iso 13006 Annex G - Uni En 14411 Annex G - Bia Gl



CARATTERISTICHE TECNICHE Technical Features - Caracteristiques Techniques - Technische Eigenschaften Technische Eigenschaften - Características Técnicas - Технические Характеристики		NORMA Standard - Norme Norm - Norma - Норма	VALORI Value - Valeur Vorgabe - Valor - Средние	
	PLANARITÀ Flatness - Planéité - Ebenflächigkeit - Planaridad - Плоскостность	UNI EN ISO 10545/2	± 0,26% / ± 1,5MM	
		ASTM C485 WARPAGE	-	
		CALIBRATED ± 0,75% (MAX ± 0,09 IN)	-	
		RECTIFIED ± 0,40% (MAX ± 0,05 IN-SIZE ≤ 60CM) (MAX ± 0,07 IN-SIZE > 60CM)	± 0,25% (MAX ± 0,05 IN-SIZE ≤ 60CM) (MAX ± 0,07 IN-SIZE > 60CM)	
	ASSORBIMENTO D'ACQUA (VALORE MEDIO IN %) Water absorption (Average value expressed in %) - Absorption d'eau (Valeur moyenne en %) Wasseraufnahme (Durchschnittswert in %) - Absorción de agua (Valor medio en %) Поглощение воды	UNI EN ISO 10545/3 ≤ 0,5 %	CONFORME	
	RESISTENZA ALL'ABRASIONE/PEI Surface abrasion/PEI - Résistance à l'abrasion/PEI - Abriebfestigkeit/PEI Resistencia a la abrasion/PEI - Стойкость к глубокому/PEI	UNI EN ISO 10545/7 ASTM C1027	PEI 3 / 5	
	RESISTENZA ALLA FLESSIONE Modulus of rupture - Resistance to the flexion - Biegefestigkeit Resistencia a la flexion - Прочность на изгиб	UNI EN ISO 10545/4	≥ 50 N/MM ²	
	FORZA DI ROTTURA Breaking strength - Résistance à la rupture - Bruchlast Resistencia a la rotura - Разрывное усилие	UNI EN ISO 10545/4	≥ 2000 N	
		ASTM C648	700 LBS	
	RESISTENZA AL GELO Frost resistance - Résistance au gel - Frostbeständigkeit - Resistencia a las heladas - Морозостойкость	UNI EN ISO 10545/12 ASTM C1026	CONFORME UNAFFECTED	
	RESISTENZA CHIMICA AD ALTE E BASSE CONCENTRAZIONI DI ACIDI E BASI Chemical resistance to high and low acid and basic concentrations Résistance chimique aux hautes et basses concentrations d'acides et de bases Chemikalienfestigkeit bei hohen und niedrigen Konzentrationen von Säuren und Basen Resistencia química con concentraciones altas y bajas de ácidos y bases Химическая стойкость к высоким и низким концентрациям кислот и щелочей	UNI EN ISO 10545/13 ASTM C-650	GA - GLA - GHA UNAFFECTED	
	RESISTENZA ALLE MACCHIE Stain resistance - Résistance aux taches - Fleckenbeständigkeit Resistencia a las manchas - Стойкость к образованию пятен	UNI EN ISO 10545/14 CTI 81-7D	5 NO EVIDENT VARIATION	
	COEFFICIENTE DI ATTRITO Slip resistance - Coefficient de glissement - Rutschfestigkeit Barfußbereich Coeficiente de atrito medio - Коэффициент трения	DIN 51130	OLD MATT -	LAPPATO PLUS -
		DIN 51097	-	-
		ANSI A 137.1- 2012 DCOF (SECTION 9.6)	WET ≥ 0,42	WET ≥ 0,42
		B.C.R.A.	-	-

Per maggiori chiarimenti sui dati tecnici e sulla garanzia consultare il catalogo generale in vigore. - For further information on technical specifications, please consult our up-dated general catalogue. - Pour toutes informations supplémentaires sur les données techniques et sur les garanties, veuillez consulter le catalogue general en vigueur. - Für weitere Informationen über technische Daten und Garantie beziehen sie sich bitte auf den aktuellen Gesamtkatalog. - Para ultiores informaciones sobre los datos tecnicos y la garantia, vease el catalogo general en vigor. - Более подробную информацию о технических данных и гарантии смотрите в действующем сводном катал.



Articolo Item Reference Artikel Articulo Артикула	Formato (cm) Size (cm) Format (cm) Tamaño (cm) Формат (cm)	Spessore (mm) Thickness (mm) Epaisseur (mm) Stärke (mm) Espesor (mm) Толщина (mm)	Pz. x Mq. Pieces x Sqm Pcs / M ² Stk. x Qm Pzs x Mc. Шт. x Кв.М.	Pz. x Scat. Pieces x Box Pcs / Bte Stk. x Krt. Pzs x Caja Шт. x Кор.	Mq. x Scat. Sqm x Box M ² / Bte Qm x Krt. Кв.М. x Кор.	Peso x Scat. (Kg) Weight x Box (Kg) Poids / Bte (Kg) Gewicht x Krt. (Kg) Peso x Caja (Kg) Вес x Кор. (Kg)	Scat. x Pal. Boxes x Pal. Bte / Pal. Krt. x Pal. Cajas x Pal. Кор. x Подд.	Mq. x Pal. Sqm x Pal. M ² / Pal. Qm x Pal. Mc. x Pal. Кв.М x Подд.	Peso x Pal. (Kg) Weight x Pal. (Kg) Poids / Pal. (Kg) Gewicht x Pal. (Kg) Peso x Pal. (Kg) Вес x Подд. (Kg)
603A_R	60x60	10	2,78	3	1,080	25,00	36	38,88	900
633A_R	30x60	10	5,56	6	1,080	25,00	40	43,20	1000
593A_P	59x59	10	2,87	3	1,044	24,30	36	37,58	875
293A_P	29,4x59	10	5,77	6	1,041	24,30	40	41,64	972
R303A_P	29,4x29,4	10	11,57	4	0,346	8,00	40	13,84	320
I303A_R	30x30	10	11,11	5	0,450	10,00	84	37,80	840
M303A_R	30x30	10	11,11	5	0,450	10,00	84	37,80	840

EMIL
CERAMICA

Emilceramica is a brand of Emilceramica S.r.l. a socio unico	Sede Commerciale/Amministrativa
emilgroup.it/emilceramica emilgroup.it	Via Ghiarola Nuova, 29 - 41042 Fiorano Modenese (Mo) Italy T +39 0536 835111 - info@emilceramicagroup.it F (Italy) +39 0536 835958 - (Export) +39 0536 835490